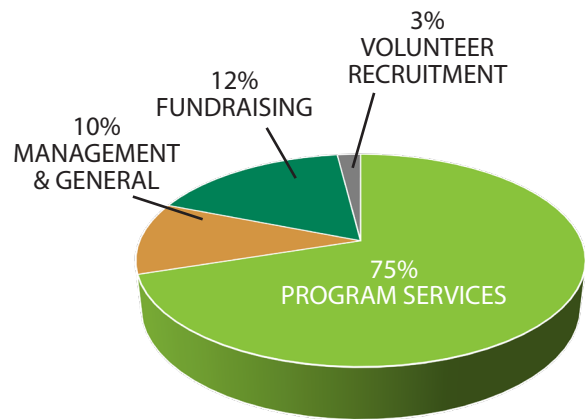
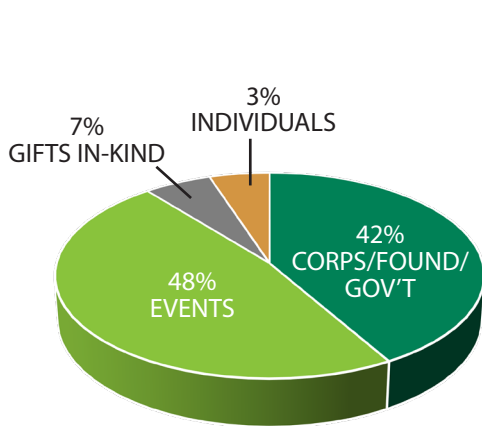


# FINANCIAL SUMMARY



## SOURCES OF FUNDING 2018-19

Corps/Found/Gov't	\$ 1,861,593
Events (net of direct expenses)	\$ 2,085,142
Gifts In-Kind/Other	\$ 293,219
Individuals	\$ 145,164

## EXPENSES 2018-19

Program Services	\$ 3,025,079
Volunteer Recruitment	\$ 99,076
Management & General	\$ 404,396
Fundraising	\$ 495,379

## OPERATING SUPPORT AND REVENUE

	2018-2019	2017-2018
Contributions	\$ 2,006,757	\$ 1,841,283
Events (Net of direct expenses)	\$ 2,085,142	\$ 2,103,010
In-Kind & Other Income	\$ 293,219	\$ 251,867
<b>TOTAL REVENUE AND SUPPORT</b>	<b>\$ 4,385,118</b>	<b>\$ 4,196,160</b>

## OPERATING EXPENSES

	2018-2019	2017-2018
Program Services	\$ 3,025,079	\$ 2,683,806
Management & General	\$ 404,396	\$ 348,916
Fundraising & Volunteer Recruitment	\$ 594,455	\$ 707,749
<b>TOTAL EXPENSES</b>	<b>\$ 4,023,930</b>	<b>\$ 3,740,471</b>

## Excess of Operating Support & Revenue

Over Expenses	\$ 361,188	\$ 455,689
---------------	------------	------------

For a complete set of audited financial statements, please visit [www.jany.org](http://www.jany.org) or call us at 212.907.0050.